



# RANGEVIEW

ARCHITECTURAL DESIGN GUIDELINES  
JANUARY 2023

e2+associates  
LAND ADVISORY GROUP

**GENSTAR**  
BRINGING LAND TO LIFE

# Table of Contents

1.0	ARCHITECTURAL GUIDELINES OBJECTIVES .....	5
2.0	GENERAL .....	5
3.0	LAND USE AND ZONING REGULATIONS .....	5
4.0	SITE PLANNING.....	5
4.1	House Placement.....	5
4.2	Setbacks .....	5
4.2.1	Front Setback.....	5
4.2.2	Corner Sideyard Setbacks .....	6
4.3	Zero lot line lots .....	6
4.4	Site coverage.....	6
4.5	Grading.....	6
4.6	Driveways .....	6
4.7	Retaining Walls.....	6
4.7.1	Materials .....	7
5.0	GENERAL REQUIREMENTS .....	8
5.1	House Sizes .....	8
5.2	House Widths.....	8
5.4	Building Height .....	8
5.5	Repetition .....	8
5.5.1	Exterior Design.....	8
5.5.2	Colours .....	8
6.0	ARCHITECTURAL DESIGN.....	9
6.1	Architectural Style - .....	10
	PRAIRIE .....	10
	PRAIRIE .....	10
	CRAFTSMAN .....	10
	FARMHOUSE .....	11
	BROWNSTONE .....	12
	SCANDINAVIAN.....	13
	INTERNATIONAL .....	14
	URBAN .....	15
6.2	House Design/Portfolio.....	16
6.3	High exposure elevations.....	17
6.4	Garages .....	17
6.4.1	Lane-less lots.....	17
6.4.2	Laned lots.....	17
6.5	Garage Doors .....	17
6.6	Roof Design & Pitch .....	17
6.7	Front entries .....	18
6.8	Porches .....	18
6.9	Balconies.....	18
	Second storey balconies are encouraged, especially on collector roads. Balconies must be designed and detailed appropriately to suit the architectural style of the home or building. ....	18
6.10	Front Steps.....	18
6.11	Columns.....	18
6.12	Front doors .....	18
6.13	Windows .....	18
6.14	Chimneys/Box-outs .....	19
6.15	Trims & Detailing .....	19

6.16	Address Plaques and Monuments .....	19
6.17	Exterior Lighting .....	20
7.0	MATERIALS & COLOURS .....	21
7.1	Permitted materials .....	21
7.2	Colours .....	21
8.0	ADDITIONAL REQUIREMENTS .....	22
8.1	Discretion .....	22
8.2	Enforcement.....	22
8.3	Amendments .....	22
8.4	Landscape Design .....	22
8.5	Show Homes .....	22
8.6	Green Initiatives .....	22
9.0	CONTACTS.....	23
	Developer.....	23
	Engineer.....	23
	Architectural.....	23
	Schedule A – Lot Codes and Special Requirements .....	24
	Schedule B – Example Landscape Designs .....	25
	Schedule C – Suggested Species .....	32

## URBAN TRADITIONAL LIVING

The community of Rangeview is being developed in a sought after, convenient location in the fast-growing southeast sector of Calgary. The vision for the community of Rangeview draws on the Genstar's track record of delivering progressive urban neighbourhood in a great locale. Rangeview will focus on diverse architecture blended with thoughtful and natural landscape design.

Rangeview will welcome numerous housing types and styles to accommodate the needs and tastes of many buyers. The broad mix of housing types will be unified through common design elements and features that reinforce the character and lifestyle of the neighborhood in an expression of harmony.

Purchasers will have the opportunity to select from a broad range of home styles and design to their desired taste along the spectrum of modern and contemporary architecture.

Ultimately the streets of Rangeview will provide a recognizable comfort through traditional forms and massing, stimulated by modern or classic details and features. Rangeview will draw on the individuality of its buyers to create a place where all types of homes and people exist happily, synergistically, and together shape the community of Rangeview.

Additional attention and detail will be focused on the major and collector roads in Rangeview, providing a thoughtful presentation of urban residential architecture for the enjoyment of residents and visitors alike.





## 1.0 ARCHITECTURAL GUIDELINES OBJECTIVES

The architectural guidelines for Rangeview will initially establish the character of the community and ultimately strive to maintain the integrity of the community for years to come. The guidelines will aim to ensure that the community of Rangeview presents a long-term impression of quality yet recognizes the importance of attainable housing product. The theme for Rangeview will blend clean lines and contemporary architecture blended with thoughtful and natural landscape design.

## 2.0 GENERAL

The Architectural Design Guidelines for Rangeview are to be used in conjunction with Genstar's overall Architectural Design and Construction Guidelines and the Lot Code and Special Requirements provided with each lot release.

The developer's architectural agent will review all homes in the community of Rangeview, to ensure compliance with all aspects of the architectural guidelines, before being permitted to proceed for permits and construction. All construction must comply with all local land use, building codes, and ordinances.

## 3.0 LAND USE AND ZONING REGULATIONS

Due to the variety of land use and zoning requirements in the Rangeview area all builders are to ensure familiarity with the appropriate requirements and stipulations.

## 4.0 SITE PLANNING

### 4.1 House Placement

Builders are to choose home designs that are suited to all the attributes of the lot. Builders are to review all available information and ensure the proposed house considers the lot size, lot location, site grading and view potential. Houses are expected to:

- fill the lot width
- avoid unnecessary use of retaining walls
- provide a compatible relationship with adjacent homes
- provide interesting and appropriate elevations in exposed locations

### 4.2 Setbacks

#### 4.2.1 Front Setback

The developer's architectural agent will monitor front setbacks. To create more interesting streetscapes, variety in the front setbacks will be required along the street.

In areas where a more expansive street ambience is desired an increase in the minimum front setback will be utilized and variety between units will occur. Homes with greater massing will require increased setbacks to reduce their dominance on the street.

Minimum Front setback recommendations from the property line are:

R-G / R-Gm – 3.0 to 5.0M

R-1N – 4.75 to 7.5M

#### **4.2.2 Corner Sideyard Setbacks**

Lots are designed to provide an increased street sideyard on corner lots. A preferred sideyard of 3.0M is to be achieved wherever possible.

#### **4.3 Zero lot line lots**

- Homes must be sited along the property line opposite from the M.A.R.O.W.
- M.A.R.O.W. access is intended for both adjacent homes
- In locations where front drive garages are required, garages are not always placed adjacent to the zero-lot line side of the lot; garage placement must match the approved garage location per the developer's marketing map for each phase

#### **4.4 Site coverage**

- Total site coverage will be as per the City of Calgary by-law requirements

#### **4.5 Grading**

- Builders are responsible for ensuring that the house type is suitable to the lot grading and all grading will be subject to requirements of the local lot grading by-law
- Builders are to familiarize themselves with the engineering grade plan and ensure that drainage patterns are to be established on all lots that channel surface water away from the house on all sides and into adjacent drainage swales and storm water systems
- Grading and drainage patterns must coordinate with adjacent lots – no drainage across adjacent lots can occur
  - Minimum permitted slopes – all grassed/landscaped areas – 2%
  - Maximum permitted slopes – Front and rear yards - 15%, Side yards – 33%, Driveways – 10%
- Downspouts are to be positioned to direct water away from the house to adjacent streets or side or rear drainage swales
- Storm water cannot be directed onto adjacent lots
- All lots are required to have a minimum loam depth of 300 mm

#### **4.6 Driveways**

- Driveways must meet all City of Calgary requirements particularly with regards to width. Driveways must not exceed the following:
  - Maximum 6.0M wide on any lots with a width of 9.0M or less
  - Maximum 7.0M wide on any lot with a width greater than 9.0M and less than 15.0M
  - As per Developer requirements, no driveway may exceed the width of the garage and no additional surfaces for the purposes of parking are permitted

#### **4.7 Retaining Walls**

- Builders are to choose houses that suit the lot grading and avoid unnecessary use of retaining walls
- Failure to adhere to the building grade plan or approved grades may result in the need for retaining walls
- If retaining walls are required, they will be entirely the responsibility of the builder
- Builders are required to comply with the City of Calgary Lot Grading Bylaw and self-resolve any grading disputes with adjacent properties
- All retaining structures must be within property lines
- Concrete wing walls will be acceptable when not visible from a street or public space
- Any retaining wall exceeding 1.00 meter in height MUST be approved by a professional engineer and may require a development permit

#### **4.7.1            *Materials***

- Acceptable materials for retaining walls are
  - Landscaping blocks (i.e.: Alan block)
  - Natural boulders, or
  - Poured concrete with a smooth or aggregate surface

## 5.0 GENERAL REQUIREMENTS

### 5.1 House Sizes

Minimum house sizes will be specified for each phase in Rangeview based on the Lot Codes & Special Requirements (Schedule "A") provided at the release of lots. Houses are expected to have a consistency of mass and volume within the streetscape. Houses that are not suitably consistent will require additions or alterations to improve their streetscape presence.

### 5.2 House Widths

Houses are expected to utilize the lot width available to provide maximum frontage to the street. Minimum house widths will be specified on the Lot Codes and Special Requirements (Schedule "A") provided at the release of lots.

### 5.4 Building Height

The maximum building height will be as per the City of Calgary by-law requirements.

### 5.5 Repetition

#### 5.5.1 Exterior Design

To ensure suitable variety of all streetscapes, houses of the same or similar design and detailing will be separated. Between similar house designs there must be a minimum of 2 houses between when on the same side of the street and a minimum of 2 houses between when on the opposite side of the street. For semi-detached homes, similar building designs must be separated by a minimum of 2 buildings on the same side of the street or a minimum of 2 buildings between when on the opposite side of the street. Row house buildings may not repeat on the same street or within the same line of sight, unless approved as part of a Masterplan review and at the discretion of Genstar or its Agent.

#### 5.5.2 Colours

To further ensure homes offer an element of distinction on streetscapes separation will be required between colour schemes.

Between similar colour schemes there must be a minimum of 2 houses between when on the same side of the street and a minimum of 2 houses between when on the opposite side of the street.

Houses with significant differences in architectural style and design may be permitted, at the agent's discretion, to have similar colour schemes in closer proximity than is typical.

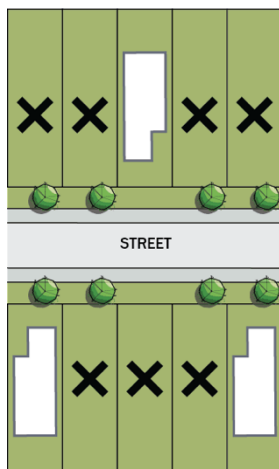


Figure 1. Single Family

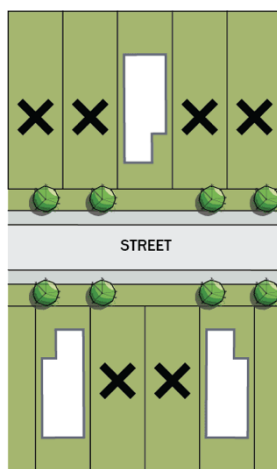


Figure 2. Single Family

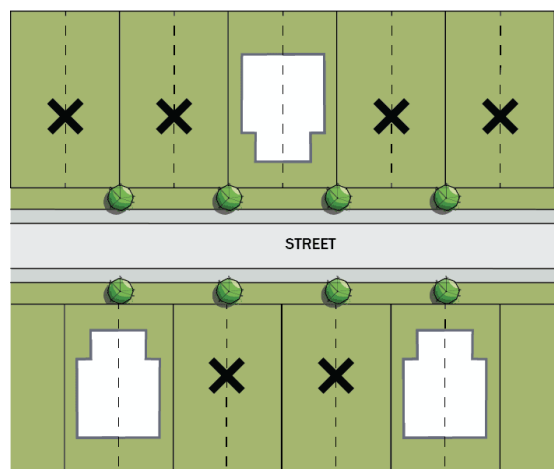


Figure 3. Semi-detached

## 6.0 ARCHITECTURAL DESIGN

In Rangeview, the exterior of all homes will be based on traditional architectural styles that showcase either a modern or classic take on each.

The styles accepted will be broad and will allow for diversity and individuality. These styles may include Craftsman, Prairie, Farmhouse, Brownstone, International, Scandinavian, or Urban. Other styles, well appointed, may be accepted by the developer or it's agent with appropriate architectural rationale provided with the application for approval.

Creating an infrastructure based on the solid massing and common roof forms characteristic of these styles will establish the strength of the home's exterior. Blending modern and classic architectural renditions will allow for each resident's unique choices to be on display.

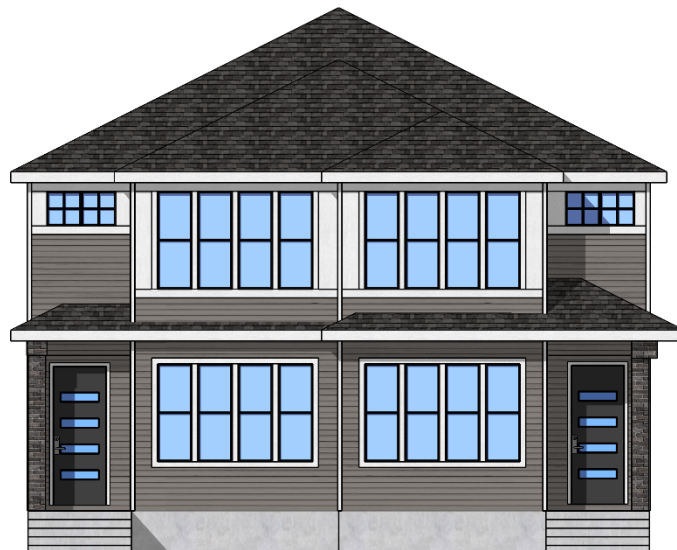
Designs of all styles are to use materials in masses and not in abundance. Masses of the design should be wholly clad and materials returns must be a minimum of 2', or where possible, returned to an inside corner.

## 6.1 Architectural Style Guides

### PRAIRIE

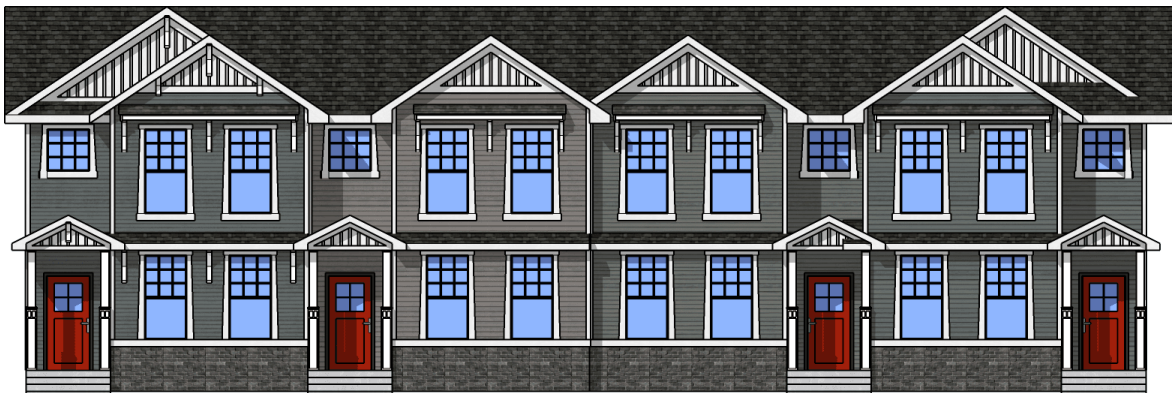
- Low, sloped Hip rooflines
- Simple trims
- Smooth Masonry finish
- Horizontal Elements
- Strong vertical wing walls

- Large windows in consistent configurations
- Large heavy columns
- Single storey wings or box-outs
- Contrasting wall materials



## CRAFTSMAN

- Low sloped open gable rooflines
- Multiple gable rooflines
- Repetitious window patterns
- Accent material in gable ends
- Full or wrapped porches
- Simple bracket or beam details
- Simple square columns

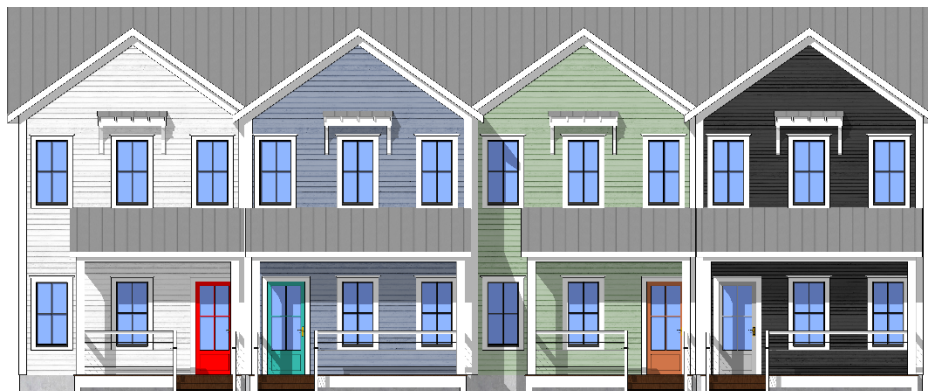




## FARMHOUSE

- Gabled rooflines
- Simple trims
- Simple bracket details

- Shed roof lines features
- Large windows in consistent patterns
- Board and Batten features





## BROWNSTONE

- Steep pitched repetitive gables (Min. 10/12)
- Small eaves (Max 12")
- Masonry front entry walls
- Uniform steps or porches

- Stacked floor plates
- Repetitious window patterns
- Clean trim detailing
- Horizontal banding
- Brick finish and base



## SCANDINAVIAN

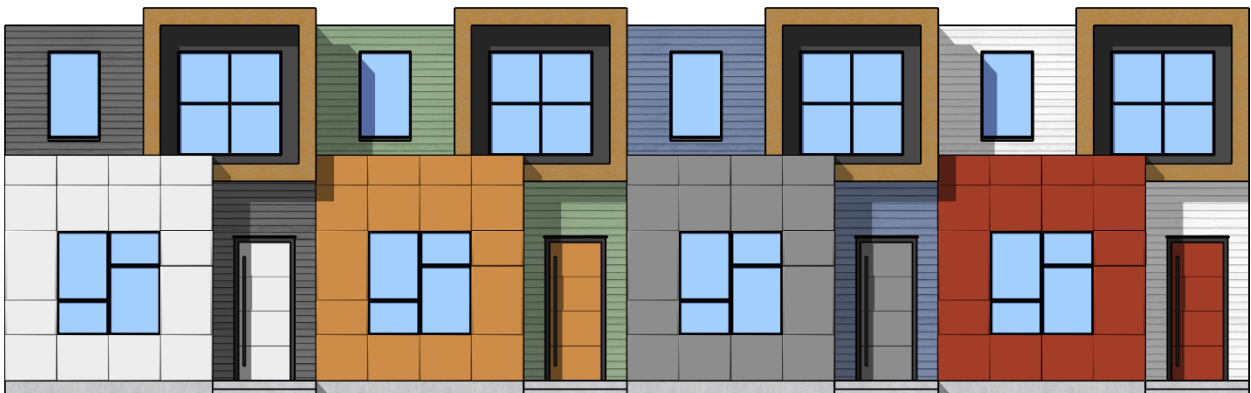
- Gabled rooflines
- Simple trims
- Buttress walls
- Shed roof lines features
- Large windows in consistent patterns

- Board and Batten features
- Wood tone features
- Zero overhang
- Symmetrical a-frame form



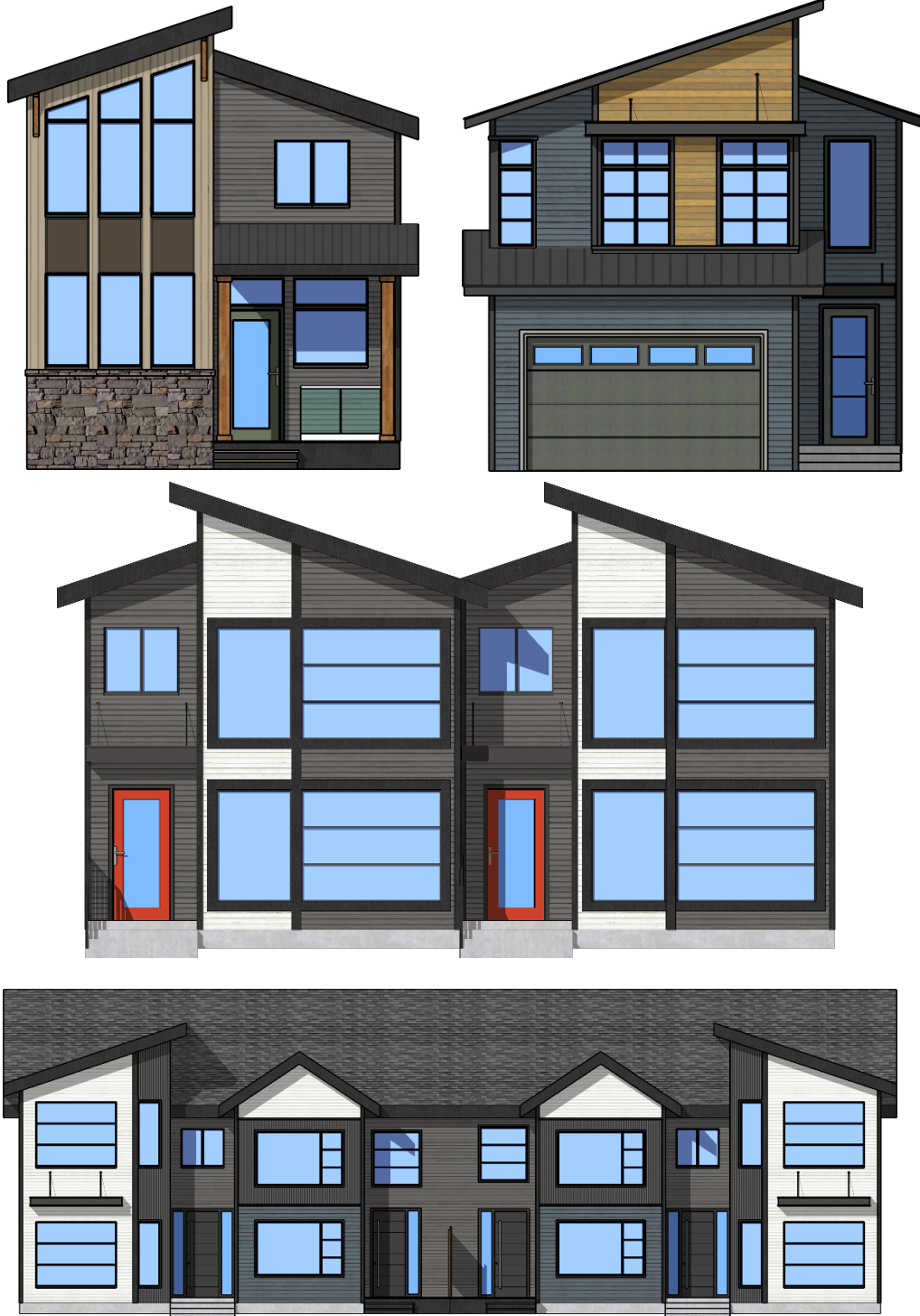
## INTERNATIONAL

- Flat roofs
- Windows flush with outer walls
- Asymmetrical facades at 90 degree angles
- Glass, steel and cast materials
- Natural colour palette
- Radically simplified forms



## URBAN

- Steep pitched or single angled rooflines
- Flat roofs
- Large expanses of window glazing
- Unusual window configurations
- Clean trim detailing
- Varied eave overhangs



## **6.2 House Design/Portfolio**

The Rangeview style is being created to recognize and establish Rangeview as a premier, progressive community. Builders are to ensure that each elevation in their portfolio addresses this style and must utilize portfolio reviews prior to submitting for approvals. Builders are required to develop exclusive elevations for Rangeview.

## **6.3 High exposure elevations**

Homes with high exposure elevations (corner lots, side and rear exposure) will require detailing on the exposed elevations that represents the overall style of the home and includes similar detailing to that on the front elevation. These elevations must include:

- Increased level of detailing such as trims, battens, shutters, vents or other decorative features similar to the front
- Exterior materials that are consistent with those used on the front elevation
- Roof forms that match the front and provide variety to the rear streetscape
- Rear detached garages are required on corner lots and will be noted in the Lot Codes (Schedule "A")
- Low exposure elevations are also identified in the Lot Codes and will be permitted to have a reduced level of articulation but will require materials and elements to match the front of the home at the discretion of Genstar or it's Agent

## **6.4 Garages**

### **6.4.1 Laneless lots**

All laneless lots are required to have attached front drive garages.

- Front drive garages must be integrated into the overall exterior design of the home as much as possible to reduce the domination on the streetscape
- Second storey massing over garages must be set back a minimum of 24" from the front of the garage to ensure the massing will not overpower the streetscape

### **6.4.2 Laned lots**

All laned lots are required to provide rear parking spaces to meet the minimum requirement of the Land Use Bylaw.

- Rear garages are to match the exterior design, materials and colours of the home
- Rear corner lot garages will require additional detailing to match the home

## **6.5 Garage Doors**

All homes will require a garage door to compliment the architectural style.

- Windows are permitted and glazing panels in unique configurations are preferred
- For a full encompassing look to the front façade garage doors are to be painted to match the house or trim colour

## **6.6 Roof Design & Pitch**

The roof design and pitch must be suitable to the architectural style represented.

- Single sloped rooflines will be permitted when suited to the overall house design provided the overall massing addressing a traditional form
- Flat roof accent areas will be encouraged to emphasize some styles
- Typical roof overhangs are to be 1'-6" except where the Architectural style commands that suitable overhangs are either larger or smaller
- Roof overhangs on zero lot line homes can be a maximum of 1'-0"
- Rooflines are to be made as interesting as possible by the variation of rooflines and using dormers or gable ends
- Rooflines on all highly exposed elevations are to incorporate dormers or gable ends with decorative treatments that match to the front elevation



- Second storey roofline features are to match the front elevation in all high exposure locations
- Lower profile homes such as bungalows may require steeper pitched rooflines to provide compatible massing on the streetscape
- Trellis and pergola accents are encouraged enhancements on front entries, over garage overhead doors, and on exposed rear elevations, if style appropriate

## **6.7 Front entries**

The front entry of a home is an integral element of the overall design and is expected to be a focal point of the front elevation and/or exposed side elevation. Front entries provide an opportunity to fully express the character of the home and create a welcoming feature. Front entries are to be well enhanced with decorative treatments that encompass the chosen style.

## **6.8 Porches**

Front porches will be encouraged when designed to engage the architectural persona. This will include porches that have cleanly detailed columns, simple railings, stylized brackets, and trim work. Front porches are encouraged to be finished in smooth or exposed aggregate concrete with metal, glass, or no railings. Stoops or porches less than full width must be smooth, pre-cast concrete.

Porches of all styles must include:

- All vertical surfaces, if not concrete, must match the trim or wall colour of the home
- Pressure treated material may only be used for flat surfaces, and must be brown
- The bases of all porches are to be closed in and finished in an appropriate solid material that compliments the style of the home

## **6.9 Balconies**

Second storey balconies are encouraged, especially on collector roads. Balconies must be designed and detailed appropriately to suit the architectural style of the home or building.

## **6.10 Front Steps**

To address the long-term low maintenance expectations in Rangeview all front steps are to be precast or poured concrete steps. If the application is a part of a master planned approval, all homes must have consistent finishes.

## **6.11 Columns**

Entrances can be justly enhanced with feature columns that add to the overall expression.

- All columns are to be designed in a modernized version suited to the style of the home – these columns may include smooth finishes, simple square cap and base details, metal trim or finish
- All columns must be suitably sized, be well suited to the exterior design of the home and appear to have structural integrity
- All columns must be finished in a decorative material, vinyl sided posts are not acceptable.

## **6.12 Front doors**

Stylish doors can immediately set the tone of the exterior design of a home and considerations for the following addressed:

- Door locations are to be as highly visible as possible
- Doors with a modern edge that are suited to architectural style are preferred
- Entry doors must be fibreglass with a gel stain finish
- Glass entry doors maybe be accepted in some designs but must have metal clad exteriors

## **6.13 Windows**

Windows are an extremely important element of any home's architectural style. Larger expanses of glass will establish the strength of the modern style and more unusual configurations will provide

interest and excitement. Appropriately segmented or detailed windows will lend to the classic take of each style in most cases. This may include:

- Strong horizontal mullions,
- Mullions of varying directions
- Non-symmetrical layouts and pane sizes

Exterior designs must:

- Ensure that windows present as a strong element windows must include divided windows or simulated divided lites - window grills inside the glass are not acceptable
- Window styles, sizes and groupings should be proportionate to the wall space available. Large windows will not require additional battens. Thicker frame sizes or brick moulds are required on these windows.
- Acceptable window frame materials are prefinished vinyl or prefinished metal clad

#### 6.14 Chimneys/Box-outs

Chimneys & box-outs provide interest on the exterior of a home. To ensure that they are treated as integral elements chimneys and box-outs must:

- Be finished to match the exterior wall material or suitable complementary finish.
- Extend down to grade in all exposed locations.

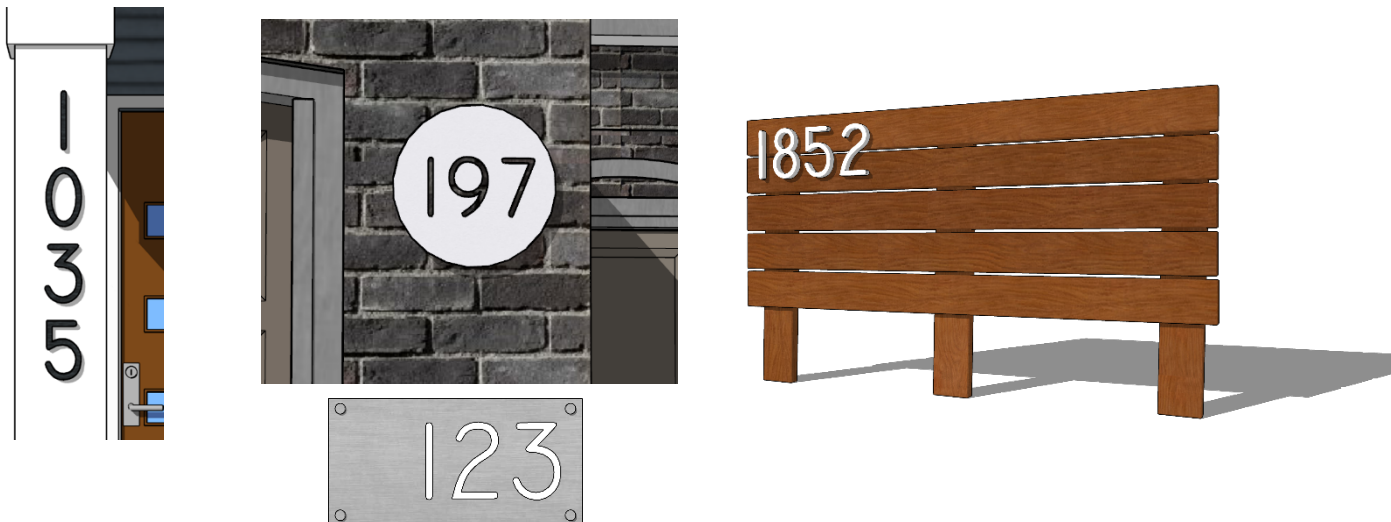
#### 6.15 Trims & Detailing

To ensure the clean, neat aspect of the architectural style is complemented all trim work must meet the following requirements:

- Trim material will be Smartboard or equivalent
- Trims may be metal clad
- Board and batten detailing must be monochromatic, no contrasting permitted
- Crezone or plywood will not be permitted on the exteriors
- Trim and detailing materials are to be maintenance free
- Stucco battens are not permitted
- Minimum fascia depth of 6" inches is required

#### 6.16 Address Plaques and Monuments

Address plaques are a finishing touch for many homes, and a great opportunity for individual expression. Rangeview will require modern address plaques or monuments to be submitted with each design and must be uniform for master planned submissions. Examples of address plaques, numbers, and monuments are shown below:



### **6.17 Exterior Lighting**

Each home will require porch and garage carriage lights that complement the architectural style. Homes on collector or major roads will also require recessed lighting to illuminate second storey massings. To ensure lighting is thoughtfully chosen for each home, it will be required as part of the architectural submission.



## 7.0 MATERIALS & COLOURS

The community of Rangeview requires long-term sustainability of the exteriors of all homes throughout the area. Maintenance free materials are required on all exteriors. The use of materials that provide prefinished surfaces that retain their integrity is encouraged. Homes along main collector roads will be required to utilize composite siding on all exposed elevations and may have colour matched vinyl on non-exposed elevations. Vertical vinyl siding or vinyl board and batten will not be permitted on main collector roads.

### 7.1 Permitted materials

Rangeview will provide a distinct architectural theme and will not rely on dark vinyl siding with cultured stone accents. Strong designs that don't incorporate masonry will be approved at the discretion of the Architectural Agent. Standard vinyl colours are acceptable but must be accompanied by a substantial volume of one of the secondary or masonry materials listed below, again at the discretion of the Architectural Agent.

#### *Roofing*

Asphalt shingles – Black, Brown, or Grey tones only

#### *Primary wall materials*

Composite/cement siding

Corrugated metal

Vinyl siding

Metal siding and panels

Premium Vinyl siding

Simulated wood

Composite Board & Batten

#### *Secondary wall materials*

Composite/cement siding

Corrugated metal

Stucco – Smooth Finish

Metal siding and panels

Composite shakes (straight)

Simulated wood

Composite Board & Batten

#### *Trims*

Composite wood

Metal clad

#### *Masonry*

Brick

Manufactured stacked stone

Stone

### 7.2 Colours

In Rangeview, colour will be utilized to add to the interest and excitement of the exteriors.

- Colour schemes are to include at least one of the following: premium vinyl, simulated wood secondary material, style appropriate brick or masonry
- Colour schemes that include unusual or dramatic colours to highlight signature elements are encouraged provided repetition of colour schemes will be monitored to ensure pleasing variety is achieved
- Board and batten surfaces must be monochromatic rather than contrasting
- Predominantly white or light colour schemes require black windows

## 8.0 ADDITIONAL REQUIREMENTS

### 8.1 Discretion

The Developer and the Architectural Agents may apply their respective judgments when approving or disapproving anything regulated or controlled by these guidelines. The Developer and the Architectural Agent may provide relaxations to the guidelines in their sole and absolute discretion.

### 8.2 Enforcement

The Developer only may enforce the guidelines; no purchaser of any lot in the development may enforce these guidelines.

### 8.3 Amendments

The developer may from time to time amend these guidelines as it sees fit in its sole and absolute discretion.

### 8.4 Landscape Design

Homes on main collector roads and master planned submissions will require comprehensive landscape designs. Individual properties will require 1 tree in the front yard as well as 6 shrubs. Trees are to be a minimum of 50mm caliper for deciduous trees, and 2m tall for coniferous trees. Shrubs are to be a minimum 2-gallon pot. Master planned submissions will require irrigation as part of the landscape design. Designs must be included as part of the preliminary approval. Integrated planters will also be required on high exposure corridors in Rangeview. Examples of landscape designs (Schedule "B") and the Suggested Species List (Schedule "C") have been provided.

### 8.5 Show Homes

Show Homes are integral to the successful adoption of new communities. Builders are required to identify show homes on their submissions and reviews will be completed comprehensively for all builders before any approvals are released. This will ensure diversity amongst builder product but will also provide for continuity and cohesiveness.

### 8.6 Green Initiatives

Rangeview will be progressive in the implementation of green construction practices. Rough-ins are required for electric vehicle charging and solar panels. Other green initiatives may be added over time to maintain a focus on progressive green design fundamentals.

## 9.0 CONTACTS

### **Developer**

GENSTAR DEVELOPMENT COMPANY  
8826 Blackfoot Trail SE, Suite 230  
Calgary, AB T2J 3J1 Canada  
Telephone: (403) 256-4000  
Fax: (403) 256-9121

### **Engineer**

PASQUINI & ASSOCIATES GEOMATICS LTD.  
300 929 11 Street SE  
Calgary, Alberta T2G 0R8  
T: (403) 452-7677  
F: (403) 452-7660  
[www.pasquiniandassociates.com](http://www.pasquiniandassociates.com)

### **Architectural**

E2 + Associates  
23<sup>rd</sup> floor, 150 9 Ave SW  
Calgary AB T2P 3H9  
T: 403 256-5123 F: 403 256-1782  
Toll Free: 1 888 443-7446  
e2.associates  
[support@e2.associates](mailto:support@e2.associates)

## Schedule A – Lot Codes and Special Requirements



# RANGEVIEW

## GENSTAR DEVELOPMENT COMPANY

Rangeview Phase 2

### Lot Codes and Special Requirements

January 2023

#### House Sizes

Code	Minimum Bungalow/Bi-Level	Minimum Split Levels/Two Storeys
A	900 ft <sup>2</sup>	1200 ft <sup>2</sup>
B	1000 ft <sup>2</sup>	1400 ft <sup>2</sup>
C	1200 ft <sup>2</sup>	1600 ft <sup>2</sup>
D	1300 ft <sup>2</sup>	1800 ft <sup>2</sup>
E	1500 ft <sup>2</sup>	2000 ft <sup>2</sup>
F	1500 ft <sup>2</sup>	2200 ft <sup>2</sup>
G	1800 ft <sup>2</sup>	2450 ft <sup>2</sup>

O Duplex Housing

R Row Housing

#### Special Requirements

Code	Requirement
------	-------------

(width)	Minimum house width in feet/does not include jogs in garage, porches.
1.	High exposure corner lot
2.	Low exposure corner lot
3.	High exposure rear elevation
4.	Low exposure rear elevation
5.	Landscape design required
6.	Master plan review required
7.	Composite siding required on exposed elevations
8.	Front garage required
9.	Rear garage required
10.	Rear deck required
11.	Second storey lighting required

#### Examples

D (24) 3,5,10,11	Minimum 1300 ft <sup>2</sup> - Minimum 24' wide - High exposure rear elevation, landscaping design required, Rear deck required, second storey lighting required.
B (20) 2,9	Minimum 1000 ft <sup>2</sup> - Minimum 20' wide - Low exposure corner lot, rear garage required

## Lot Codes

Block No.	Lot No.	SFF	Land Use	Lot Codes
3	1	21'	R-Gm	R(18) 1,5,6,7,9,11
3	2	18'	R-Gm	R(18) 5,6,7,11
3	3	22'	R-Gm	R(18) 5,6,7,11
3	4	24'	R-Gm	O(20) 5,6,7,11
3	5	24'	R-Gm	O(20) 5,6,7,11
3	6	24'	R-Gm	O(20) 5,6,7,11
3	7	24'	R-Gm	O(20) 5,6,7,11
3	8	24'	R-Gm	O(20) 5,6,7,11
3	9	24'	R-Gm	O(20) 1,5,6,7,9,11
4	1	24'	R-Gm	O(20) 1,5,6,7,9,11
4	2	24'	R-Gm	O(20) 5,6,7,11
4	3	24'	R-Gm	O(20) 5,6,7,11
4	4	24'	R-Gm	O(20) 5,6,7,11
4	5	24'	R-Gm	O(20) 5,6,7,11
4	6	24'	R-Gm	O(20) 5,6,7,11
4	7	22'	R-Gm	R(18) 5,6,7,11
4	8	18'	R-Gm	R(18) 5,6,7,11
4	9	18'	R-Gm	R(18) 5,6,7,11
4	10	21'	R-Gm	R(18) 1,5,6,7,9,11
5	1	24'	R-Gm	O(20) 1,5,6,7,9,11
5	2	24'	R-Gm	O(20) 5,6,7,11
5	3	24'	R-Gm	O(20) 5,6,7,11
5	4	24'	R-Gm	O(20) 5,6,7,11
5	5	24'	R-Gm	O(20) 5,6,7,11
5	6	24'	R-Gm	O(20) 5,6,7,11
5	7	22'	R-Gm	R(18) 5,6,7,11
5	8	18'	R-Gm	R(18) 5,6,7,11
5	9	21'	R-Gm	R(18) 1,5,6,7,9,11
5	10	25'	R-G	O(20)
5	11	25'	R-G	O(20)
5	12	25'	R-G	A(20)
5	13	25'	R-G	A(20)
5	14	25'	R-G	A(20)
5	15	25'	R-G	A(20)
5	16	25'	R-G	A(20)
5	17	25'	R-G	A(20)
5	18	25'	R-G	A(20)
5	19	25'	R-G	A(20)
5	20	25'	R-G	A(20)
5	21	25'	R-G	A(20)
5	22	25'	R-G	A(20)
5	23	25'	R-G	A(20)
5	24	25'	R-G	A(20)

## Lot Codes

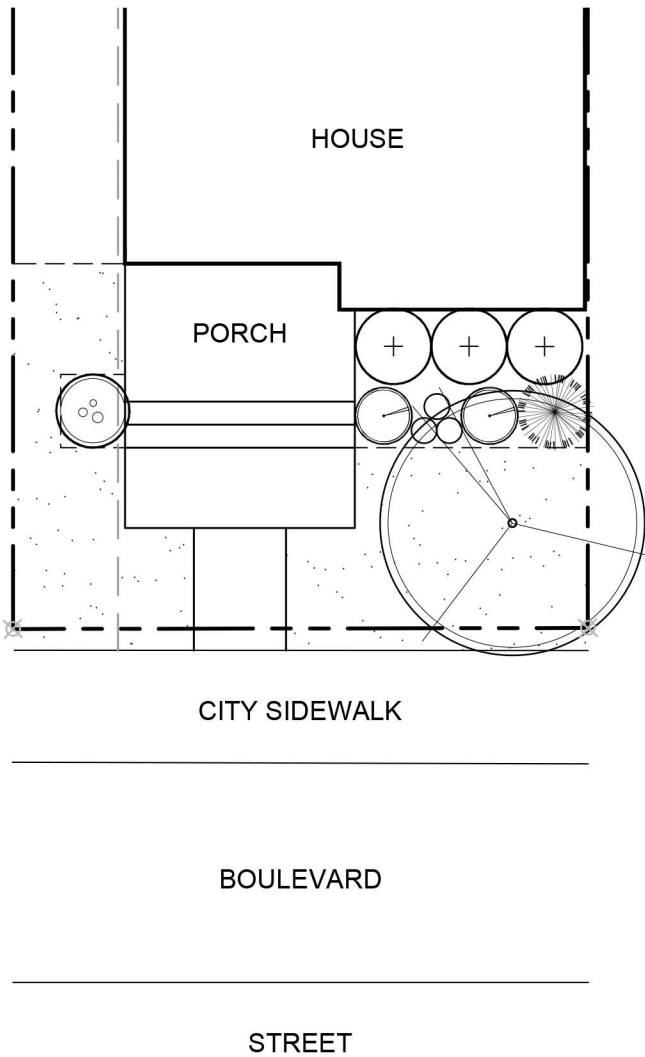
Block No.	Lot No.	SFF	Land Use	Lot Codes
5	25	25'	R-G	A(20)
5	26	25'	R-G	A(20)
5	27	25'	R-G	A(20)
5	28	25'	R-G	A(20)
5	29	25'	R-G	A(20)
5	30	25'	R-G	A(20)
5	31	25'	R-G	A(20)
5	32	25'	R-G	A(20)
5	33	25'	R-G	A(20)
5	34	25'	R-G	A(20)
5	35	24'	R-G	A(20) 2,9
5	36	25'	R-G	A(20)
5	37	25'	R-G	A(20)
5	38	25'	R-G	A(20)
5	39	25'	R-G	A(20)
5	40	25'	R-G	A(20)
5	41	25'	R-G	A(20)
5	42	25'	R-G	O(20)
5	43	24'	R-G	O(20) 2,9
6	21	23'	R-Gm	R(18) 1,5,6,7,9,11
6	22	18'	R-Gm	R(18) 5,6,7,11
6	23	18'	R-Gm	R(18) 5,6,7,11
6	24	22'	R-Gm	R(18) 5,6,7,11
6	25	24'	R-Gm	O(20) 5,6,7,11
6	26	24'	R-Gm	O(20) 5,6,7,11
6	27	24'	R-Gm	O(20) 5,6,7,11
6	28	24'	R-Gm	O(20) 5,6,7,11
6	29	24'	R-Gm	O(20) 5,6,7,11
6	30	24'	R-Gm	O(20) 1,5,6,7,11
13	1	24'	R-G	A(20) 2,9
13	2	25'	R-G	A(20)
13	3	25'	R-G	A(20)
13	4	25'	R-G	A(20)
13	5	25'	R-G	A(20)
13	6	25'	R-G	A(20)
13	7	25'	R-G	A(20)
13	8	25'	R-G	O(20)
13	9	24'	R-G	O(20) 2,9
15	1	28'	R-G	C(24) 8
15	2	29'	R-G	C(24) 8
15	3	29'	R-G	C(24) 8
15	4	29'	R-G	C(24) 8

## Lot Codes

Block No.	Lot No.	SFF	Land Use	Lot Codes
15	5	29'	R-G	C(24) 8
15	6	29'	R-G	C(24) 8
15	7	29'	R-G	C(24) 8
15	8	29'	R-G	C(24) 8
15	9	29'	R-G	C(24) 8
15	10	29'	R-G	C(24) 8
15	11	29'	R-G	C(24) 8
15	12	29'	R-G	C(24) 8
15	13	29'	R-G	C(24) 8
15	14	29'	R-G	C(24) 8
15	15	29'	R-G	C(24) 8
15	16	29'	R-G	C(24) 8
15	17	29'	R-G	C(24) 8
15	18	28'	R-G	C(24) 8

## Schedule B – Example Landscape Designs





Legend



SOD ON TOPSOIL



PLANTING BED EDGE



DECIDUOUS TREE



LARGE DECIDUOUS SHRUB



MEDIUM DECIDUOUS SHRUB



SMALL DECIDUOUS SHRUB

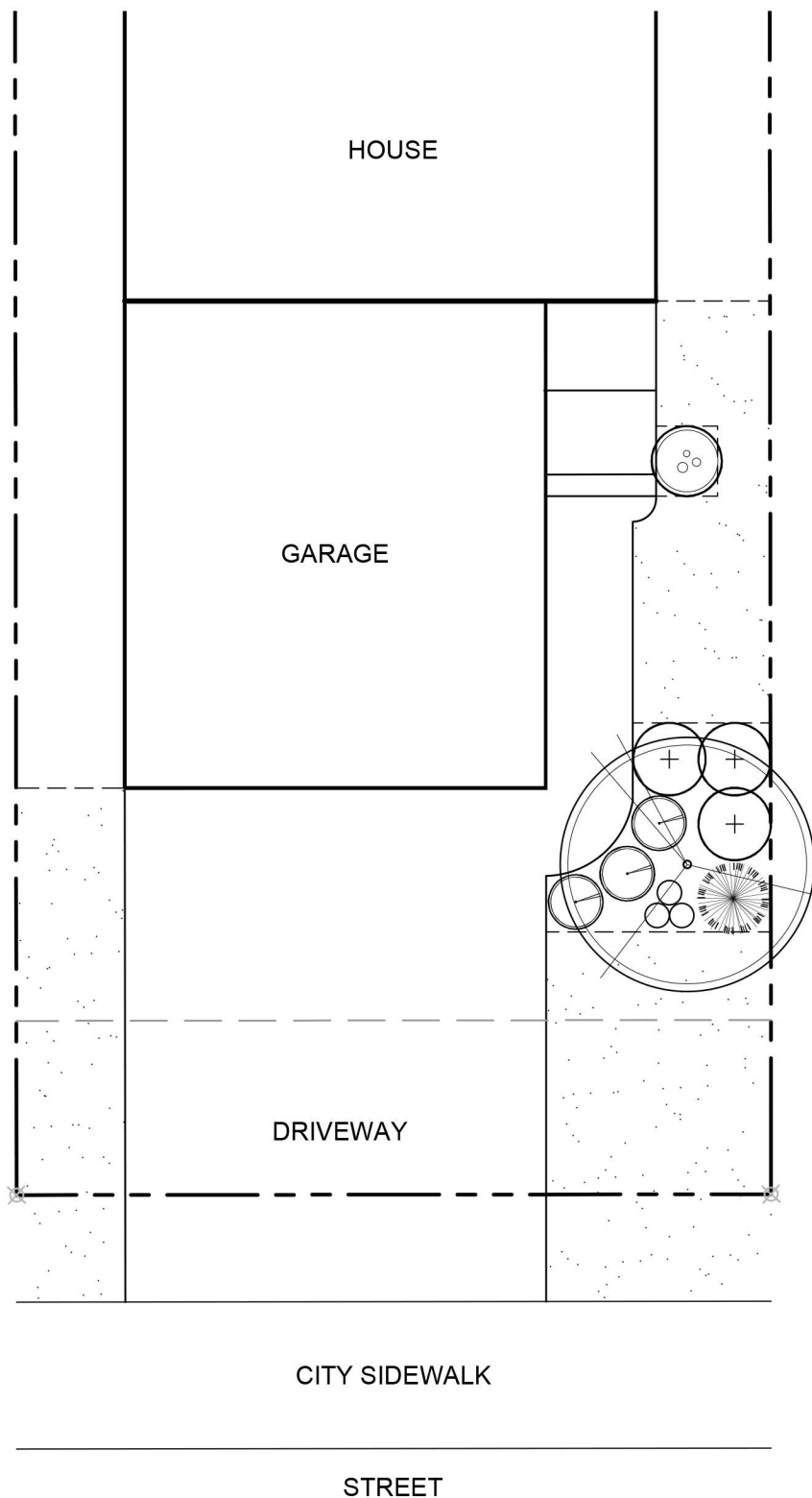


CONIFEROUS SHRUB



PERENNIALS & GRASSES

NOTE:  
- REFER TO 'SUGGESTED SPECIES LISTS'  
FOR PLANT MATERIAL RECOMMENDATIONS



## Legend



SOD ON TOPSOIL



PLANTING BED EDGE



DECIDUOUS TREE



LARGE DECIDUOUS SHRUB



MEDIUM DECIDUOUS SHRUB



SMALL DECIDUOUS SHRUB



CONIFEROUS SHRUB



PERENNIALS & GRASSES

### NOTE:

- REFER TO 'SUGGESTED SPECIES LISTS'  
FOR PLANT MATERIAL RECOMMENDATIONS

## Schedule C – Suggested Species

# RANGEVIEW

## Canopy Trees:



Elm



Green Ash  
(Pathmore or Prairie Spire)

## Columnar Trees:



Columnar Aspen



Sutherland Caragana

## Other Deciduous Trees:



Goldrush Amur Cherry



Aspen Poplar



Gladiator Flowering Crab



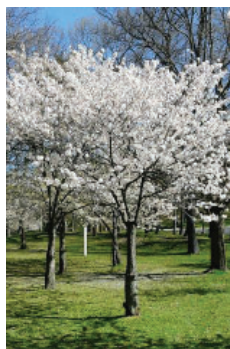
Hot Wings Maple



Japanese Tree Lilac



Larch



Pincherry



Snowbird Hawthorn



Starlite Flowering Crab

## Suggested Species List - Deciduous Trees

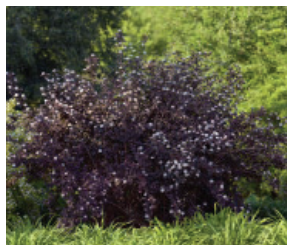


# RANGEVIEW

## Large Deciduous Shrubs:



Golden Flowering  
Currant



Diablo Ninebark



Golden Elder

## Medium Deciduous Shrubs:



Dart's Gold Ninebark



Cotoneaster



Dwarf Birch



Annabelle Hydrangea

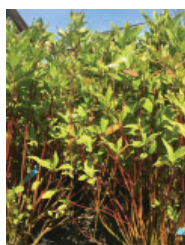


Mockorange

## Small Deciduous Shrubs:



Alfredo Compact  
Cranberry



Little Rebel  
Dogwood



Prairie Fire  
Dogwood



Prickly Wild Rose



Snowberry



Pink Beauty Potentilla



Goldmound Spirea



Anthony Waterer Spirea

## Coniferous Shrubs:



Slowmound Mugo Pine



Calgary Carpet Juniper



Arcadia Juniper



Hughes Juniper

# Suggested Species List - Shrubs



# RANGEVIEW

---

## Perennials:



Daylily Varieties



Aster Varieties



Asiatic Lily

## Grasses:



Karl Foerster Feather  
Reed Grass



Big Blue Stem Grass



Elijah Blue Fescue



Blue Oat Grass



Ribbon Grass



Blue Lyme Grass

---

## Suggested Species List - Perennials & Grasses

November 2021